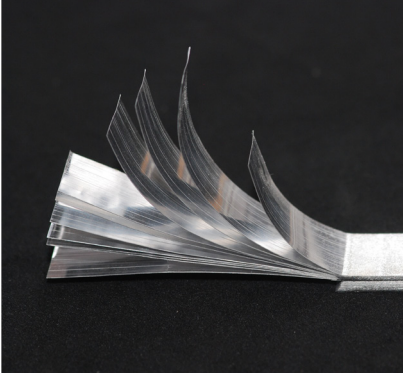


A year in review

# EWI<sup>®</sup> 2016

## Driving innovative technology into manufacturing



EWI now offers **North America's most comprehensive suite of metal AM capabilities**, including the world's only non-captive RPM machine available to manufacturers for applied R&D.

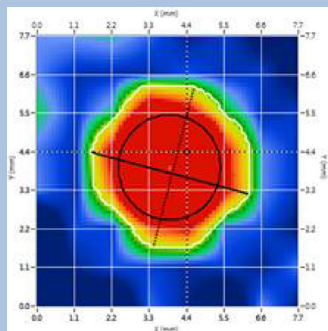


Rutuja Samant, Project Engineer

EWI launches **AMIS** (Advanced Manufacturing Implementation Strategy), a new advisory consulting and road-mapping service, to support manufacturing in evaluating and incorporating advanced technologies into facility operations.



With expanded staff and technology resources, EWI extends support to the growing **space exploration** industry via advanced laser, NDE, and AM technology.



Our third facility, **EWI Colorado**, opens with a focus on nondestructive evaluation and advanced process monitoring to help manufacturers improve first-time quality and inspection.



Rick Gardner, EWI Colorado Director

EWI's **Automation Feasibility Factory Floor**, a reconfigurable lab that allows manufacturers to design and physically test automated processes before implementation in their daily operations, helps companies evaluate new manufacturing processes with minimal cost and risk.

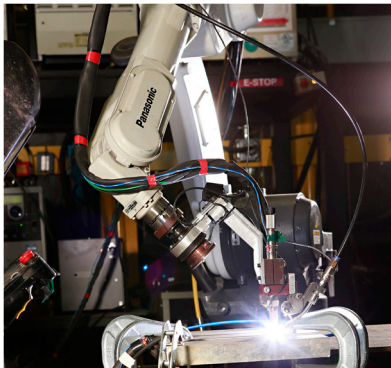
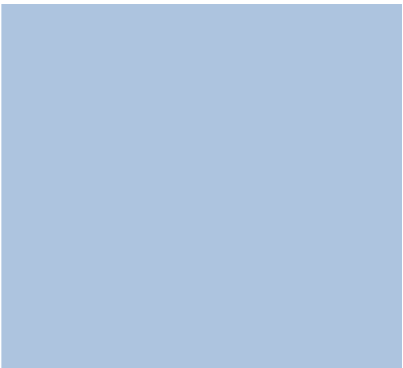
**EWI SonicSeal<sup>™</sup>**, a game-changing package sealing technology, is tested in more than 5 million retail bags. The new system, rolled out at Pack Expo, offers cost savings, reduced waste, and enhanced shelf life.



With partners LR Systems BV and Southwest Research Institute, EWI develops the **first robotic aircraft laser paint stripper** for commercial use. Full-scale production will begin in 2017.



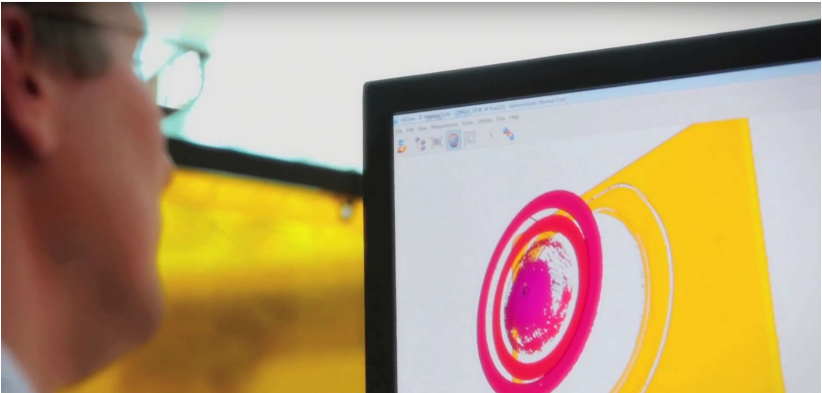
New technology leadership: Frank Medina, Ian Harris, Evgueni Todorov, Igor Dykhno



EWI develops  
**AGILE**  
Robotics Manufacturing Institute

an initiative with 48 research and industry partners to develop, validate, and transition next-generation adaptive and collaborative robotics.

In response to customer focus groups, we expand our non-contact evaluation capabilities with investments in **metrology, tomography, and topography** equipment.



EWI looks forward to shaping the future of manufacturing in 2017. To find out how, [click here](#) to read **"An Optimist's Guide to Manufacturing Innovation"** in INDUSTRY WEEK.