

Welcome!

Making the Most of Your EWI Member Benefits (Webinar)

By Dale Robinson will begin shortly.

Please note:

- Your microphone and camera are not required and will remain disabled.
- All attendees will remain in listen and view only mode.

If you have any questions:

- Please submit questions through the Q&A button on your tool bar.

For optimal viewing, the toolbar at the top may be used to optimize the following:

View Options

- select Zoom Ratio
- choose Fit to Window

Q&A button

Making the Most of Your EWI Member Benefits

Dale Robinson, *Membership Liaison*

Goals for Today

- Help EWI Members take advantage of the value and benefits provided by member services
 - “Re-introduce” you to the depth and breadth of EWI’s advanced manufacturing process technologies
 - Refresh your understanding of each member service and what it provides
 - Explain the various ways to access member services



Founded in 1984, 501(c)(3)

Your Advanced Manufacturing R&D Partner

Improve Your Manufacturing Competitiveness

Advance your ideas from concept to production faster and with less risk

Access Key Technology Experts on As-Needed Basis

Solve your toughest problems with world class experts and state-of-the-art equipment



Founded in 1984, 501(c)(3)

People + Technology



Columbus
OHIO

Joining
Forming
Materials Engineering
Structural Integrity

Modeling
Inspection
Polymers
Testing



Buffalo
NEW YORK

Additive Manufacturing
Automation
Data Science
Workforce Training

160,000 total square feet

100+

Subject Matter Experts
14 PhD, 28 MS, 37 BS

\$50M+

Capital Equipment

EWI develops and helps implement advanced manufacturing processes that provide a business impact

Benefit from Diverse Market Experience



Aerospace



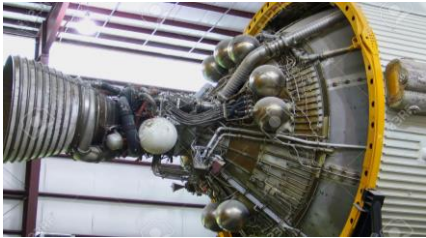
Oil & Gas



Automotive



Medical Devices



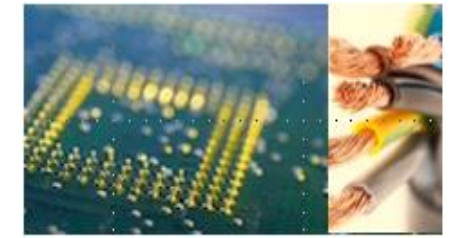
Space Exploration



Advanced Energy



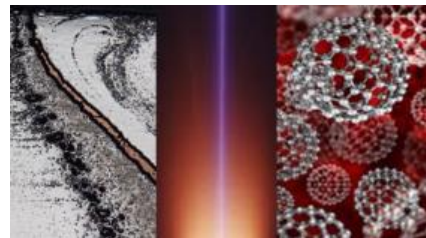
Transportation



Consumer Electronics



Defense



Government



Heavy Industry

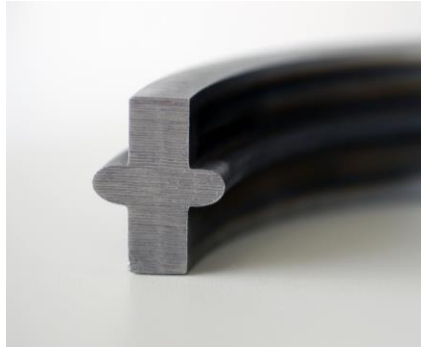


Packaging

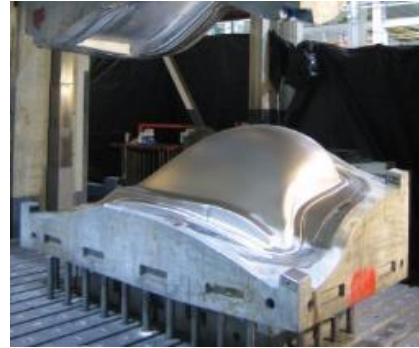
EWI Areas of Technical Expertise



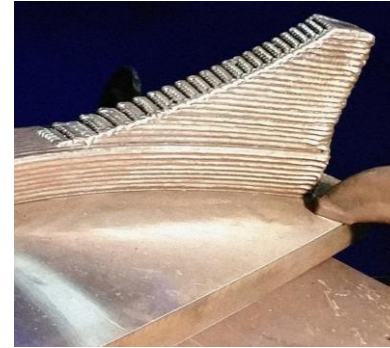
Access a Wide Range of Manufacturing Process Technology



**Materials
Joining**



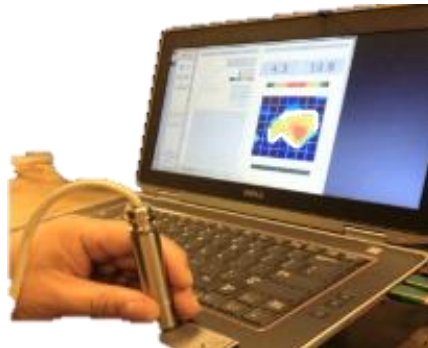
Forming



**Additive
Manufacturing**



**Structural
Integrity**



**Inspection
Technologies**

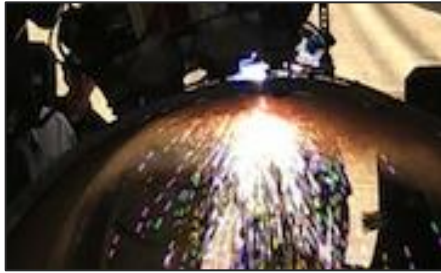


**Testing &
Characterization**



**Advanced
Automation**

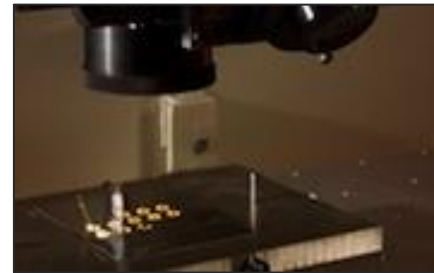
EWI Materials Joining Expertise



Arc Welding &
DED



Resistance & Solid-
state Processes



Laser Processing



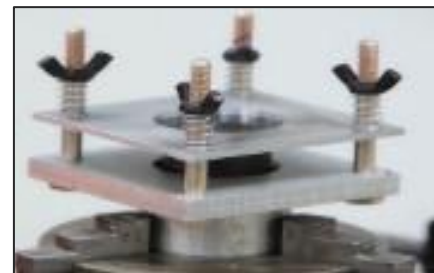
Microjoining



Friction Processes



Ultrasonic Processes



Plastics Joining

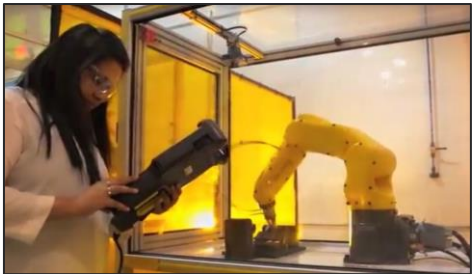


Soldering & Brazing

EWI Ancillary Manufacturing Technologies



Additive Manufacturing



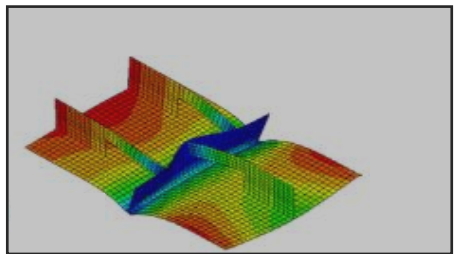
Advanced Automation



Materials Engineering



Advanced Forming



Modeling & Simulation



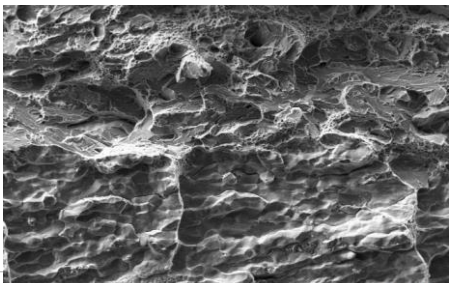
Nondestructive Evaluation



Characterization Services



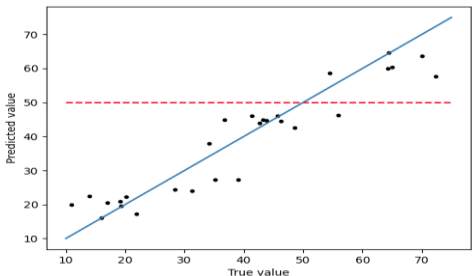
Structural Integrity



Corrosion &
Environmental Testing



Training



Data Science

Poll Question #1



EWI Member Services



EWI Membership Services

- Technical Inquiries
- Design Reviews
- Engineering Site Visit
- Library Services
- Cyber Security Assessment
- Member Communications



Technical Inquiries

- Access EWI's **100+** engineers with decades of experience
- Ask questions about any technical issue, problem, or goal

Ways to Submit Requests

Member Central [Technical Inquiry Form](#)

Email: memberservices@ewi.org

Phone: 614.688.5252

Contact Dale Robinson, Membership Liaison; drobinson@ewi.org;

M 614.545.8979

Examples

"I need to discuss equipment and tooling for a pending application of ours."

"I need to know what test to perform to be confident that my relay-contacts won't weld under load."

"What are the key process parameters that must be controlled to manufacture consistent/repeatable continuous laser braze welds in automotive application?"

Design Reviews*

- A consultation with an EWI team of subject matter experts.
- 2-4 hour virtual or face-to-face meeting at an EWI facility

Examples

Manufacturing process selection

Design for manufacturability

Material selection

Initial failure analysis discussion



Ways to Submit Requests

Member Central [Design Review Form](#)

Email: memberservices@ewi.org

Phone: 614.688.5252

Contact Dale Robinson, Membership Liaison; drobinson@ewi.org;

M 614.545.8979



Engineer Site Visit*

- Reassess your current processes
- Full-day, on-site consultation
- Design reviews, process evaluations, manufacturing audits, and technical guidance.
- EWI provides a summary of findings, identified opportunities, and recommended next steps.

Ways to Submit Requests

Email: memberservices@ewi.org

Phone: 614.688.5252

Contact Dale Robinson, Membership Liaison; drobinson@ewi.org;

M 614.545.8979

EWI Library Services

- Literature searches
 - Submit your topic and keywords
 - Librarians search 30+ million abstracts
 - Librarians email abstracts to you for review
- Article retrievals
 - Copyright and article fees paid on your behalf
 - Send the librarians a direct link to an article for retrieval

Ways to Submit Requests

Member Central [Ask a Librarian](#)

Email: library@ewi.org

Phone: 614.688.5224

Contact Dale Robinson, Membership
Liaison; drobinson@ewi.org;

M 614.545.8979

Examples

"Dissimilar materials and cracking mechanisms"

"I found this article with a Google search; can you retrieve it for me?"



Cyber Security Assessment

- Evaluate your company's vulnerability
- Free third-party assessment
- Conducted by experts in “manufacturing” cyber security
- All EWI members are eligible through the National Association of Manufacturers (NAM) Cyber Cover program

Get Your Cyber Risk Assessment

<https://www.ahtins.com/nam-cyber-cover-ewi/>

Exclusive Member Communications



July 2022

EWI Adds Tele-gouging to Its Suite of New Tele-manufacturing Innovations

Connie LaMorte

Building upon the success of our novel tele-manufacturing prototype systems, EWI has been hard at work on another innovation: *tele-gouging*. A direct outgrowth of tele-welding, tele-gouging is like shielded metal arc welding (SMAW) but with the addition of 80-100 psi of pressure at the torch to blow away molten metal. Due to the high pressure, the gouging process is especially loud and violent which is highly uncomfortable and potentially hazardous for the operator performing it. In addition, gouging can use as much as 1300 amps compared to SMAW which uses 400 amps or less. This creates a bigger and brighter arc, more heat, and more physical risk for the worker.

Gouging is commonly applied in steel and casting foundries. It is useful for removing substantial amounts of material very quickly. However, the standard gouging method is an intense and exhausting process to perform. Some metals have particulates that require the welder to wear a respirator as well as the standard protective welding gear (cotton/leather jacket, welding helmet, and gloves). This gear is heavy and hot, so an operator cannot endure gouging for long. The tele-gouging solution eliminates the problem of physical danger to the operator and lengthens the time that gouging can be performed by providing a system that enables remote gouging from a safer and more physically tolerable environment.

- Members-only newsletters, delivered alternately each month
 - The Inside Story
 - Technical Insights
- Alerts about special seminars, technical advances, and other news
- Post-event access to webinars and trainings

Poll Question #2



Ways to Access EWI Member Services



Member Central

- 24/7 access to member benefits
- Easily submit requests to EWI experts and library services
- Search and view EWI publications
- Company wide access

<https://ewi.org/welcome-member-central/>

Get Your Login Today

ewi.org/get-your-login/

The screenshot displays the EWI Member Central interface. At the top, a black header with the EWI logo in red says "Welcome to Member Central". Below this, a white box contains a personalized welcome message for "Marissa" and a list of member benefits. To the right, a search panel is visible with the following fields and options:

- SEARCH FOR:** A text input field containing "ultrasonic".
- AND:** A dropdown menu with a downward arrow, currently showing "welding".
- FROM YEAR:** A dropdown menu with a downward arrow, currently showing "Select".
- TO YEAR:** A text input field.
- DOCUMENT TYPE:** A list of checkboxes with labels: "EWI CRP REPORT", "EWI TECHNICAL PAPER", "IIW REPORT", and "LITERATURE CITATION".
- SORT BY:** A list of radio buttons with labels: "RELEVANCE" (selected), "DATE", and "TITLE".
- SEARCH:** A red button at the bottom right of the search panel.

Contact an Industry-specific Business Development Director



James Cruz

Medical Devices and Consumer
Electronics

jcruz@ewi.org;
614.285.4394



Matt Dodds

Aerospace & Defense

mdodds@ewi.org;
614.256.9667



Ian Gibbs

Industrial Equipment & Heavy
Manufacturing

igibbs@ewi.org;
614.907.1265



Jon Jennings

Energy

jjennings@ewi.org;
614.840.6569



Doug Myers

Transportation & Automotive

dmyers@ewi.org;
614.600.7284

Another way to access member services

Dale Robinson

Membership Liaison

drobinson@ewi.org

O: 614.688.5232

M: 614.545.8979

Membership Contact Info

Member Central Website: <https://ewi.org/welcome-member-central/>

General member inquiries: memberservices@ewi.org

Library: library@ewi.org



Questions...

Dale Robinson

Membership Liaison

drobinson@ewi.org

O: 614.688.5232

M: 614.545.8979

Membership Contact Info

Member Benefit Guide: [Guide](#)

Member Central Website: <https://ewi.org/welcome-member-central/>

General member inquiries: memberservices@ewi.org

Library: library@ewi.org

