

ADDITIVE MANUFACTURING

EWI[®]

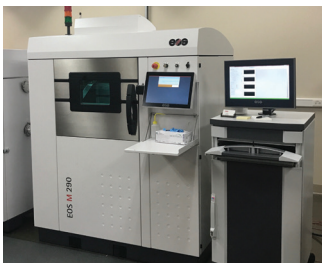
We Manufacture Innovation

ewi.org | 614.484.7600

Meeting your development needs with ASTM F42-compliant process categories and other additive manufacturing processes.

Metal AM Technologies

Powder Bed Fusion



Laser



Electron Beam

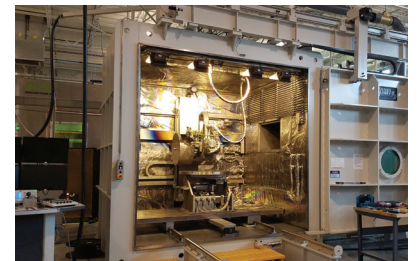
Directed Energy Deposition



Laser

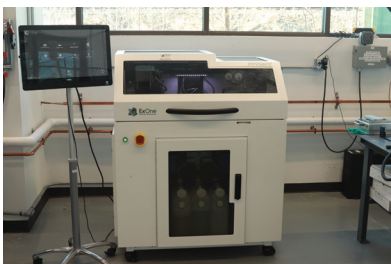


Robotic ARC

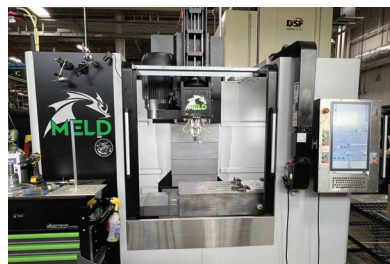


Electron Beam

Binder Jetting

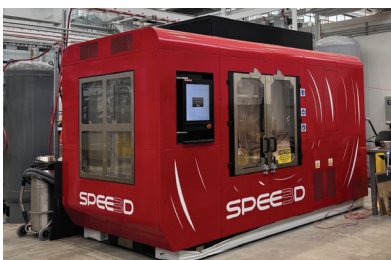


Solid State



Additive Friction Stir Deposition

High Pressure Cold Spray



Laser Assisted Cold Spray



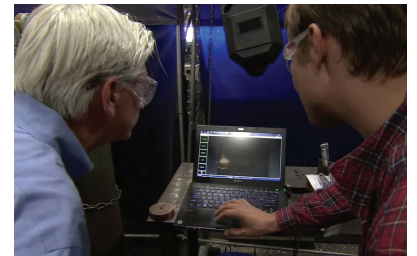
Low Pressure Cold Spray



EWI supports manufacturers throughout all stages of the AM process.

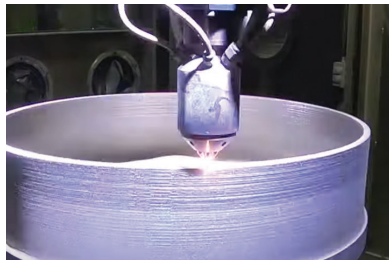
Complimentary Technologies

- Path Planning
- Predictive Modeling
- In-process Monitoring
- Adaptive Control
- Process Qualification



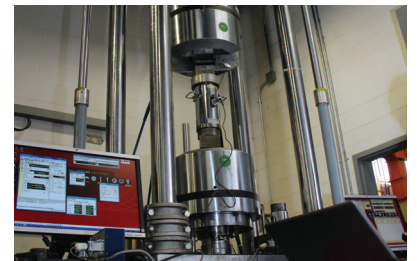
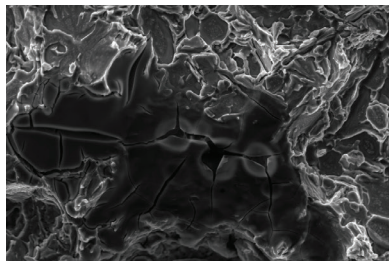
Technology Development

- Build Parameter Development
- Prototype Manufacturing
- Heat Treatment
- Machining/Finishing



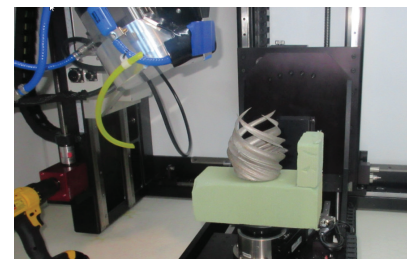
Implementation Assistance

- Equipment Specification
- Process Validation
- Entry into AM Training
- On-site Support



Testing and Qualification Capabilities

- SEM
- CT Scanning
- Mechanical Testing
- Powder Characterization
- Laser Confocal Microscopes
- Metallography



Industry Collaboration, Support & EWI Research

